

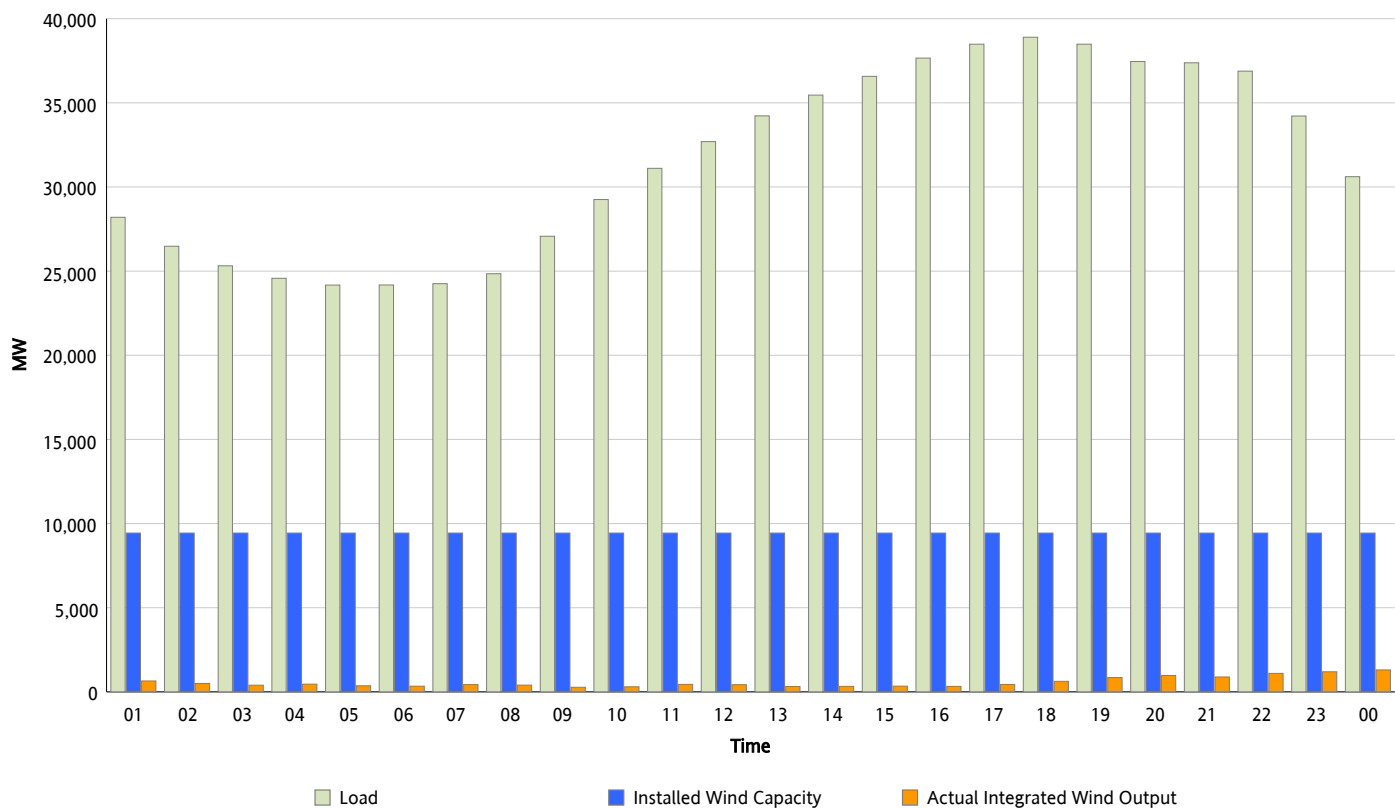


ERCOT Grid Operations

Wind Integration Report : 05/13/2012

Peak Load	38,898 MW
Load Peak Hour (HE)	18
Wind Over Peak	627 MW
Wind Record 04/13/12	7,925 MW
Max Wind Value*	1,385 MW
Wind Peak Time	23:38
Wind Integration %	4.62 %

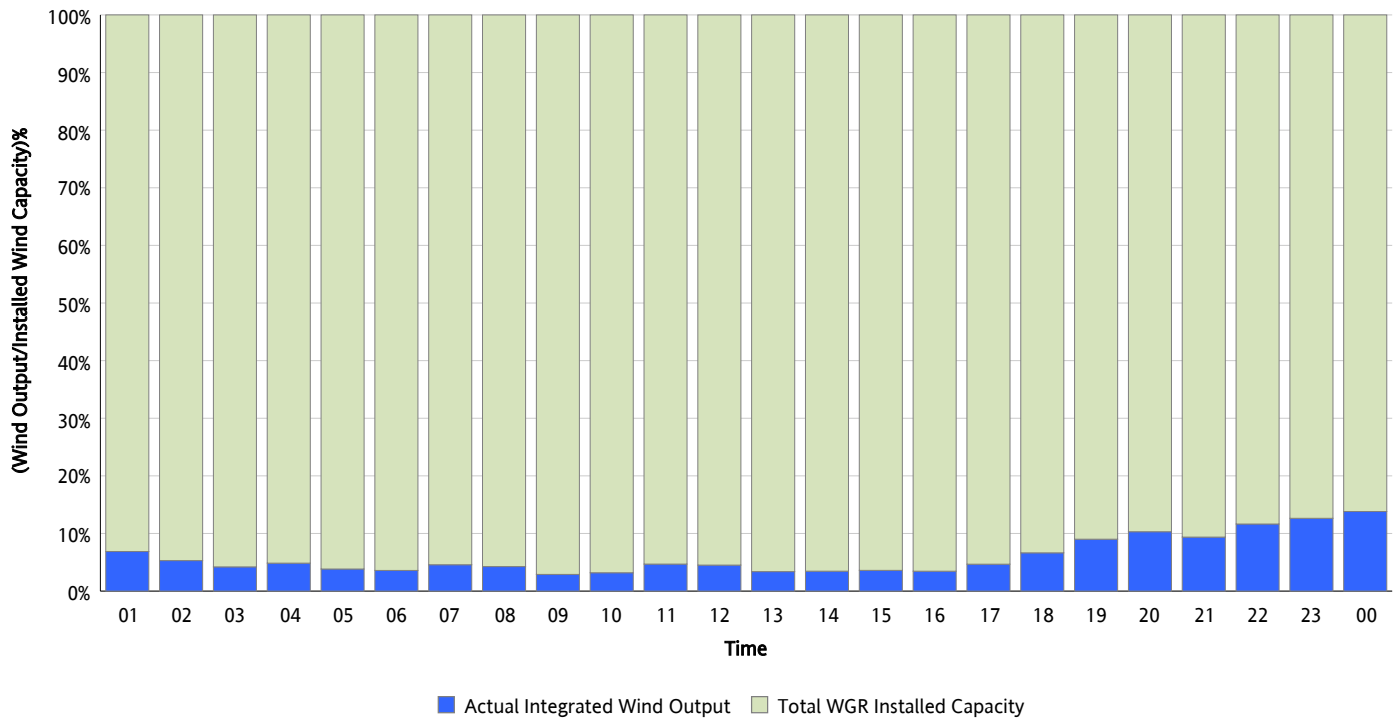
Hourly Average Actual Load vs. Actual Wind Output
05/13/2012



** Wind Record and Wind Max represent instantaneous values and the rest of the values are integrated over the hour*

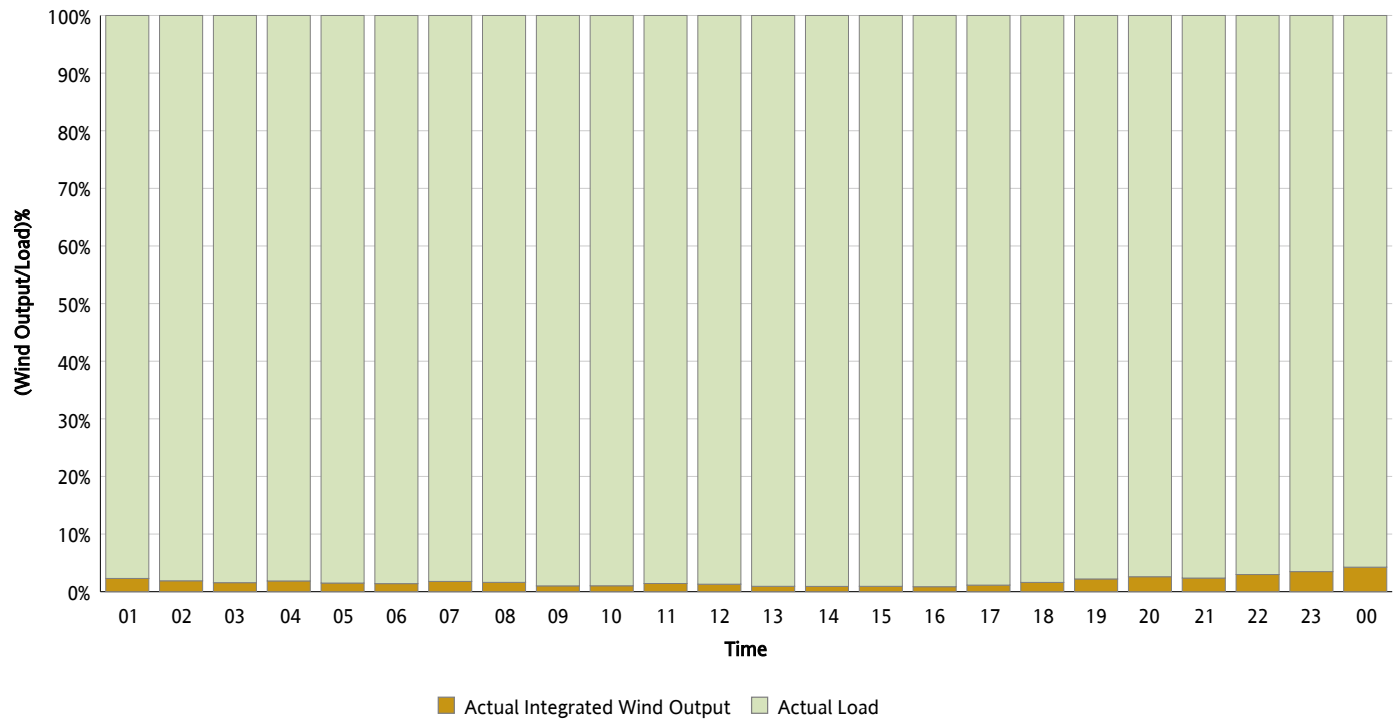
Actual Wind Output as a Percentage of the Total Installed Wind Capacity

05/13/2012



Actual Wind Output as a Percentage of the ERCOT Load

05/13/2012



ERCOT Load vs. Actual Wind Output

05/06/2012 - 05/13/2012

